

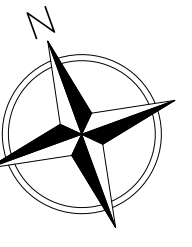
THIS DRAWING IS TO BE READ IN CONJUNCTION WITH ALL RELEVANT SPECIFICATIONS AND DRAWINGS ISSUED. FOR DISCREPANCIES OR OMISSIONS CONTACT MOBILE CAD SURVEYING SOLUTIONS LTD PRIOR TO WORK COMMENCING. THE CONTRACTOR IS TO CHECK AND VERIFY ALL BUILDING AND SITE DIMENSIONS AND LEVELS BEFORE WORK COMMENCES.

© COPYRIGHT MOBILE CAD SURVEYING SOLUTIONS LTD 2018

DO NOT SCALE THIS DRAWING - CHECK ALL DIMENSIONS ON SITE

NOTE:
AREAS DRAWN INDICATIVELY NOTED AND INDICATED BY GREY DASHED LINE AS LINE BELOW

LEVEL DATUM & ORIENTATION

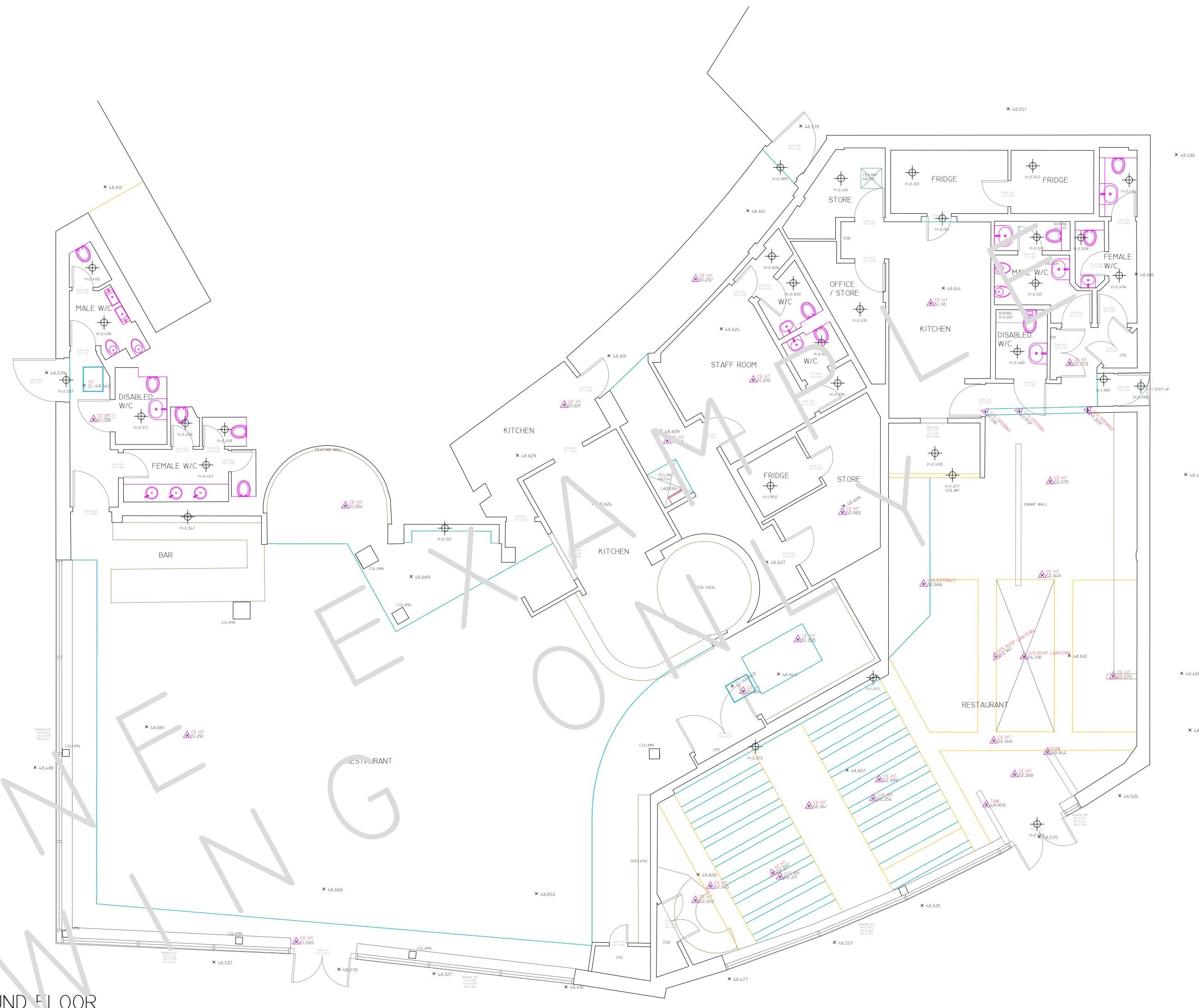


GEOGRAPHICAL ORIENTATION & NORTH POINT SHOWN ARE INDICATIVE ONLY.
ARBITRARY LEVELS CO-ORDINATED TO LOCAL STATIONS POSITIONED ON SITE DURING SURVEY.

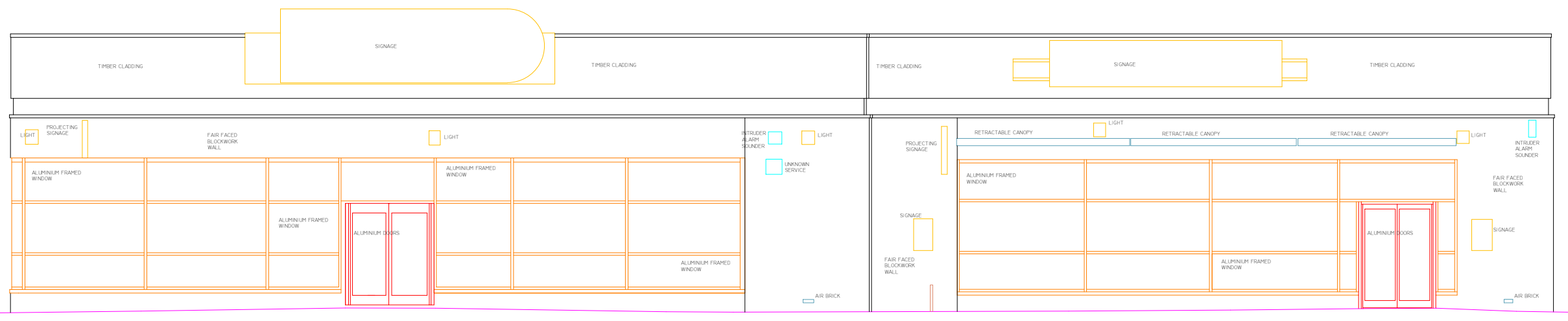
ABBREVIATIONS & LEGEND:

LEVELS & HEIGHTS	SERVICES
CL - COVER LEVEL	BT - BRITISH TELECOMS
L - INVERT LEVEL	CATV - CABLE TELEVISION
EL - LEVEL	ER - EARTHING ROD
HT - HEIGHT	ES - ELECTRICAL SUPPLY
STN - SURVEY STATION	FH - FIRE HYDRANT
BH - BENCH	GAS - GAS SUPPLY
CE - CEILING	PO - POST OFFICE TELEPHONE
J - JOISTS	SV - STOP VALVE
RA - RAFTERS	TSSU - TRAFFIC LIGHT SIGNAL
E - EAVES	
FR - FLAT ROOF	
P - PARAPET	
F - FENCE	
US - UNDERSIDE OF	
R - RIDGE	
SL - SLAB	
SF - SOFFIT	
T - TREE	
THR - THRESHOLD	
To - TOP OF	
W - WALL	
HH - HEAD HEIGHT	
OH - OPENING HEIGHT	
SH - SILL HEIGHT	

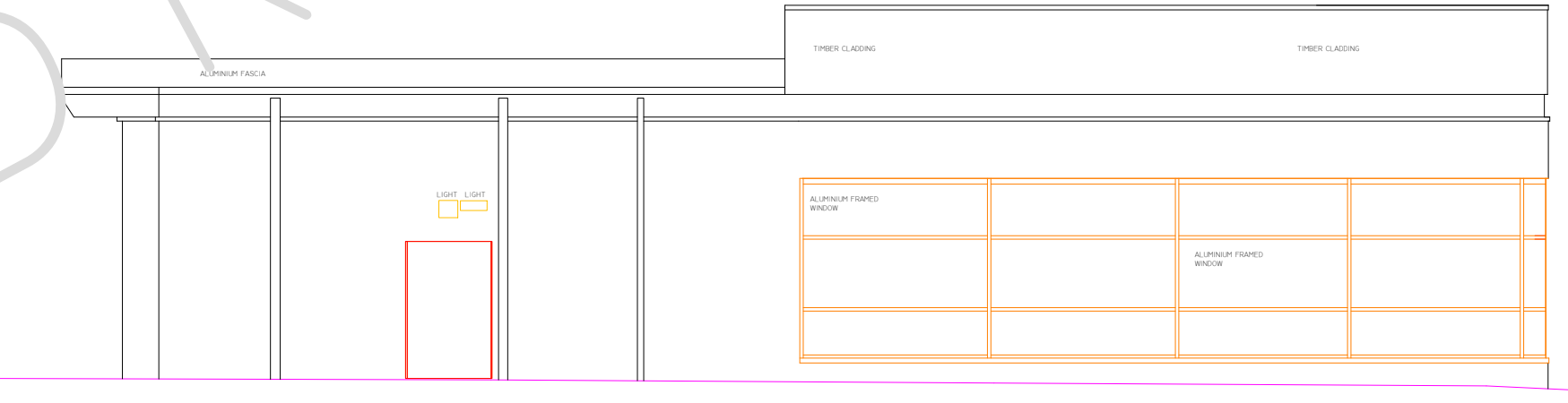
GENERAL NOTES	TYPICAL DRAWING SYMBOLS
AB - ADVERTISING BOARD	SPOT LEVEL X 90.250
AC - AIR CONDITIONING UNIT	SPOT HEIGHT
AU - AIR HANDLING UNIT	STN 01
AP - AIRTRAIL ALARM PANEL	STN 02
B - BULLARD	STN 03
BA - BARRIER	STN 04
BE - BENCH	STN 05
BS - BUS STOP	STN 06
BU - BUS STOP	STN 07
BXD - BOXING OUT	STN 08
CAN - CEILING ACCESS HATCH	STN 09
CH - CHIPMNEY	STN 10
CHD - CHIMNEY	STN 11
CPD - CLIPBOARD	STN 12
DB - DOG WASTE BIN	STN 13
DW - DWELLING WALL	STN 14
DK - DROP KUBES	STN 15
EDB - ELECTRICAL DISTRIBUTION BOARD	STN 16
EG - EXTRACT FURRIE	STN 17
E - ELECTRIC METER	STN 18
FB - FUSE BOX	STN 19
FP - FIRE PLACE	STN 20
FU - FUSE	STN 21
FAP - FIRE ALARM PANEL	STN 22
GU - GRASS	STN 23
GM - GAS METER	STN 24
HWC - HOT WATER CYLINDER	STN 25
LAM - LOFT ACCESS HATCH	STN 26
LBR - LITTER BIN	STN 27
LP - LAMP POST	STN 28
PC - PELICAN CROSSING	STN 29
PS - PAVING SLABS	STN 30
PL - PAVEMENT LIGHT	STN 31
PLT - PLANTING	STN 32
PB - POST BOX	STN 33
RS - RAILING	STN 34
RS - ROAD SIGN	STN 35
SP - SPEED BUMP	STN 36
SG - SIGNAGE	STN 37
SN - STREET NAME SIGN	STN 38
SWR - SHOWER	STN 39
SHV - SHELVING	STN 40
TB - TELEPHONE BOX	STN 41
TL - TRAFFIC LIGHT	STN 42
TM - TICKET MACHINE	STN 43
TP - TELEGRAPH POLE	STN 44
W - WATER	STN 45
WD - WARDROBE	STN 46
WH - WATER HEATER	STN 47
ZC - ZEBRA CROSSING	STN 48



GROUND FLOOR
1:100 SCALE



47M LINE
SOUTHWEST ELEVATION
1:100 SCALE



47M LINE
NORTHWEST ELEVATION
1:100 SCALE

REV	DATE	AMENDMENTS

Mobile CAD Surveying office & on site

PROJECT: MEASURED BUILDING SURVEY
ADDRESS: 61C & 61D BUGSBY WAY,

DWG NO.: 01
DWG TITLE: GROUND FLOOR & ELEVATIONS
DWG DATE: 2018
DWG SIZE: SCALE AS SHOWN @ A1
DRAWN: JW | CHECKED: JH